

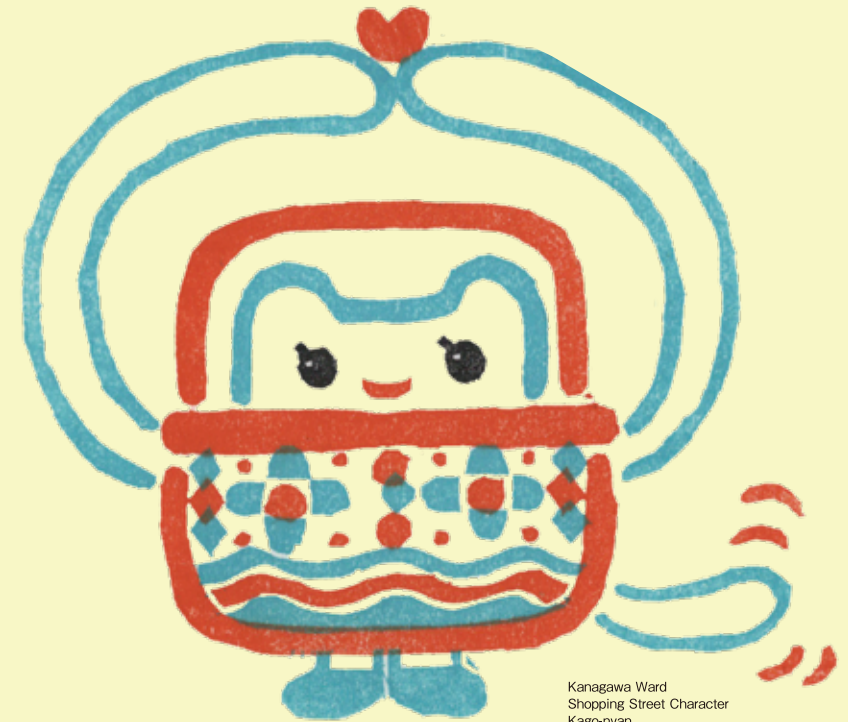
Kanagawa Ward
**Shopping Street
and
Flower Map**

~A map to explore the
Kanagawa Ward
Shopping Street and
Flower Spots~



**Kanagawa Ward
Shopping Street Character
Kago-nyan**

Cat fairy in a shopping basket.
Lives in this Shopping Street because
Kago-nyan loves the kindness of its
people. Same age as Kanagawa Ward.
Kago-nyan' s heart means, " Even with
small pocket money, I am happy because
everyone is warm and friendly♪ "



Kanagawa Ward
Shopping Street Character
Kago-nyan

Kanagawa Ward
Shopping Street and Flower Map

Issue Date: February, 2025

Front Cover Illustration: Udagawa Shinbun

Contact: Kanagawa Ward Office Community Promotion Division

TEL : 045-411-7086

FAX : 045-323-2502



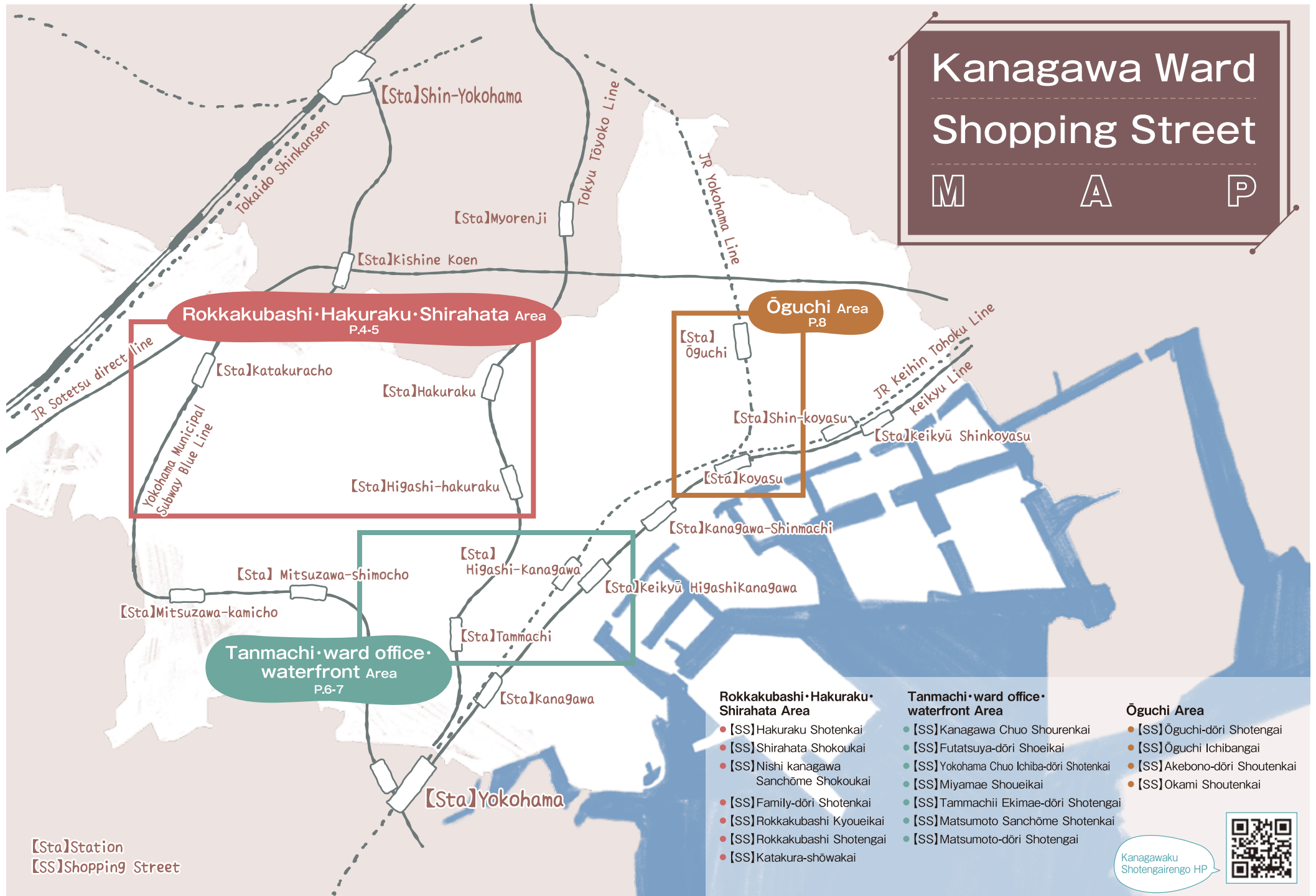
GREEN×EXPO 2027
YOKOHAMA JAPAN

2027年国際園芸博覧会 2027年3月～9月 横浜・上瀬谷



Kanagawa Ward Shopping Street

M A P



Kanagawaku Shotengairengo HP



Rokkakubashi· Hakuraku· Shirahata Area

A retro-feel Shopping Street.
With a university nearby,
it is an area loved by a wide range of age groups.



7 [SS]Katakura-shōwakai

C Katakura
Usagi-yama Park

B Kandaiji Chuo Park



[Sta]Station
[SS]Shopping Street

[Sta]Katakuracho

Yokohama Municipal Subway Blue Line

Yokohama Kamiaso Line

D Rokkakubashi Park



5 [SS]Rokkakubashi Kyōueikai



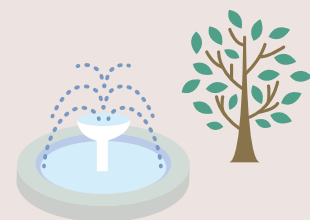
4 [SS]Family-dōri Shotenkai

1 [SS]Hakuraku Shotenkai

6 [SS]Rokkakubashi Shotenkai



3 [SS]Nishi kanaGawa Sanchōme Shokokai



A Shirahataike Park

2 [SS]Shirahata Shokokai



Tokyu Tōyoko Line

[Sta]Hakuraku

To [Sta]Hibashi-Hakuraku

Tammachi· ward office· waterfront Area

An area made up of several Shopping Street.
Four railway lines connect in this area,
contributing to its excellent access.



13 [SS] Matsumoto Sanchōme Shotenkai

KanaGawa Ward Office

[SS] Matsumoto-dōri Shotengai

12 [SS] Tammachi Ekimae-dōri Shotengai

14

9

[SS] Futatsuya-dōri Shoeikai

F Kumano Shrine

I Tammachi Park

Higashi KanaGawa Park

Takinogawa Park

KanaGawa Police Station

H Kōgaya Park

G Hoshinocho Park

11

[SS] Miyamae Shoueikai

KanaGawa Park

10 [SS] Yokohama Chuo Ichiba-dōri Shotenkai

8 [SS] KanaGawa Chuo Shourenkai

KanaGawa Soh9oh Senior High School

[Sta] Higashi-hakuraku

E Toyoko Flower Ryokudo

Hirakawacho Park

JR Tokaido Line
JR Keihin Tohoku Line

Keikyu Line

[Sta] Higashi KanaGawa

[Sta] Keikyū HigashiKanaGawa

[Sta] Tammachi

Tokyu Toyoko Line

[Sta] KanaGawa



[Sta] Station
[SS] Shopping Street

Ōguchi Area

The charm of this area is its warm and friendly atmosphere. There is always a lively vibe here, with vegetable vendors calling out to visitors.



List of shopping street and park

Rokkakubashi・Hakuraku・Shirahata Area

Shopping Street P.10-12

- 1 [SS]Hakuraku Shotenkai
- 2 [SS]Shirahata Shokoukai
- 3 [SS]Nishi-kanagawa Sanchōme Shokoukai
- 4 [SS]Family-dōri Shotenkai
- 5 [SS]Rokkakubashi Kyoueikai
- 6 [SS]Rokkakubashi Shotengai
- 7 [SS]Katakura-shōwakai

Park P.12-13

- A Shirahataike Park
- B Kandaiji Chuo Park
- C Katakura Usa9i-yama Park
- D Rokkakubashi Park

Tanmachi・ward office・waterfront Area

Shopping Street P.13-15

- 8 [SS]Kanagawa Chuo Shourenkai
- 9 [SS]Futatsuya-dōri Shoeikai
- 10 [SS]Yokohama Chuo Ichiba-dōri Shotenkai
- 11 [SS]Miyamae Shoueikai
- 12 [SS]Tanmachi Ekimae-dōri Shotengai
- 13 [SS]Matsumoto Sanchōme Shotenkai
- 14 [SS]Matsumoto-dōri Shotengai

Park P.16-17

- E Toyoko Flower Ryokudo
- F Kumano Shrine
- G Hoshinocho Park
- H Kōgaya Park
- I Tanmachi Park

Ōguchi Area

Shopping Street P.17-18

- 15 [SS]Ōguchi-dōri Shotengai
- 16 [SS]Ōguchi Ichibangai
- 17 [SS]Akebono-dōri Shoutenkai
- 18 [SS]Okami Shoutenkai

Park P.19

- J Kaminoki Park
- K Nishiterao-no-oka Park
- L Iriechō Park

Rokkakubashi • Hakuraku • Shirahata Area

Map 1 Rokkakubashi • Hakuraku • Shirahata Area
Loved by the locals
[SS] Hakuraku Shotenkai

A lively Shopping Street, popular with Tokyu Tōyoko Line Hakuraku station users and students. There is a fair number of chain stores new to the area, but you will also find many small businesses owned by proud locals.

Nearest station

● Tokyu Tōyoko Line: hakuraku Station, 1 minute walk



Map 3 Rokkakubashi • Hakuraku • Shirahata Area
Exceptional Stores
[SS] Nishi kanagawa Sanchōme Shokoukai

The Shopping Street stretches from Rokkakubashi junction to Higashi-hakuraku area. Nicknamed “Nishikana shotengai,” this area is lined with many shops and restaurants. Especially in recent years, many new unique restaurants have added to the liveliness in the area. “Nishikana yami-ichi” is held every month between April to October (excluding August).

Nearest station

● Tokyu Tōyoko Line: Hakuraku Station, 5 minute walk
 ● Yokohama Municipal Bus: Rokkakubashi bus stop, 0 minutes



Map 4 Rokkakubashi • Hakuraku • Shirahata Area
Loved by local families
[SS] Family-dōri Shotenkai

Located in 1 Rokkakubashi, the Shopping Street spreads on T-junction. From necessities to education, find facilities closely related to everyday life, such as small grocery shop, large tutoring school, medical, beauty, and relaxation establishments. As Shotenkai’s name suggests, it is loved by local families.

Nearest station

● Tokyu Tōyoko Line: Hakuraku Station, 4 minute walk

Map 5 Rokkakubashi • Hakuraku • Shirahata Area
Good-old tasteful atmosphere
[SS] Rokkakubashi Kyoueikai

A bustling shopping area, home to Kanagawa University. You will find any popular stores, from hip restaurants to handmade rice cracker shop, traditional Japanese confectionary shop, and pastry shop. Loved not only by the young people, but also the older ones in the neighborhood.

Nearest station

● Tokyu Tōyoko Line: Hakuraku Station, 5 minute walk



Map 6 Rokkakubashi • Hakuraku • Shirahata Area
A warm and friendly town
[SS] Rokkakubashi Shotengai

A major Shopping Street in Yokohama City that continues from before the war. It is loved by many people, from students to elderlies. Find many individually-owned shops, perfect for enjoying a stroll in town. You can be sure to find a new favorite shop or an item. It is worth a visit.

Nearest station

● Tokyu Tōyoko Line: Hakuraku Station, 2 minute walk



Map
7

Rokkakubashi · Hakuraku · Shirahata Area [SS] Katakura-shōwakai

This Shopping Street from the 60's has been home to many stores near Daimaru Bus Stop, livening up the town of Katakura. In recent years, the area is becoming lively with children's vibrant voices in the street. Since 2022, the new "Katuracho-Shōwakai" is aiming to become a lively town through fun events and festivals.

Nearest station

- Tokyu Tōyoko Line: Hakuraku Station, 15 minute walk
- Yokohama Municipal Subway Blue Line: Kishine Koen Station, 7 minute walk
- Yokohama Municipal Bus: Rokkakubashi Kitamachi Bus Stop, 1 minute walk



flower viewing spots



Map
A

Shirahataike Park (4 Shirahata-cho)

An unexpectedly large pond is in this quiet neighborhood. Its waters reflect cherry blossoms in spring, water lilies in summer, fall foliage in autumn. Lose track of time and soak in the change of seasons. Take a stroll on the pathway above the pond to see carps and spot-billed ducks.



Best time to see flowers: Cherry blossom (March-April), Water lilies (June-September)



Map
B

Kandaiji Chuo Park (3-25 Kandaiji)

Enjoy the collaboration of cherry blossom and tulips in spring, feel the cool breeze under the trees in summer, and sense the change of season from the coloring trees in autumn. On the pathways that go through the trees, you will hear birds chirping and children playing with full of energy by the log house.

Best time to see flowers: Cherry blossom (March-April), Tulips (April), Fall foliage (November-early December)



Map
C

Katakura Usa-gi-yama Park (2-42 Katakura)

The park bursts with cherry blossoms, Kobushi Magnolia, and Thunberg Spiraea in the spring. In autumn, Ginkgo and other trees start to change colors, and you can enjoy playing with fallen leaves and collecting nuts.

Best time to see flowers: Cherry blossom (March-April), Kobushi Magnolia (mid-March-early April), Fall foliage (November-early December)



Map
D

Rokkakubashi Park (6-1 Rokkakubashi)

The flower bed contouring the pool is filled with colorful seasonal flowers, cared for by the local community.

Best time to see flowers: Flower bed



Tammachi · ward office · waterfront Area

Map
8

Tammachi · ward office · waterfront Area Unique shops galore [SS] Kanagawa Chuo Shourenkai



A Shopping Street that prospered as a route to Central Wholesale Market. From food, clothing, goods, to hair salon and bike shops, there are approximately 65 shops in the area that support the local community. Many traditional, professional shops in the area have been serving the community for more than 50 years. With a recent influx of young families into the neighborhood, there is much potential for the area to be more lively.

Nearest station

- JR Keihin Tohoku Line: Higashi Kanagawa Station, 15 minute walk
- Tokyu Tōyoko Line: Higashi-hakuraku Station, 15 minute walk

Map 9

Tammachi · ward office · waterfront Area

Contributing to the community 【SS】Futatsuya-dōri Shoeikai

From Big Yosun to Ice Arena, the Shopping Street consists of 19 shops. Having experienced the Great Kanto Earthquake and WWII air-raids, this district is highly conscious of “Self-protecting the community,” thus proactive in disaster readiness. The district contributes to communication and revitalization in the community, by cooperating with field activities and out-reach programs of local elementary schools.

Nearest station

- Tokyu Tōyoko Line: Hakuraku Station, 5 minute walk
- Yokohama Municipal Bus: Rokkakubashi Bus Stop, 0 minute



Map 12

Tammachi · ward office · waterfront Area

Supporting the community, becoming part of people's lives 【SS】Tanmachi Ekimae-dōri Shotengai

This Shopping Street has been developed along the sides of National Route 1, in front of Higashi-Yokohama Tanmachi station, including Tanmachi Ramen Street. Recently, the local public has been invited to create a logo for the Shopping Street, as part of an effort to become close to the hearts of the community. Redevelopment is in progress with newly built apartments, leading to further revitalization of the area.

Nearest station

- Tokyu Tōyoko Line: Tanmachi Station, 1 minute walk



Map 10

Tammachi · ward office · waterfront Area

A new era in a historical district 【SS】Yokohama Chuo Ichiba-dōri Shotenkai



This Shopping Street is adjacent to Yokohama Central Wholesale Market which boasts 90 years of history. You will find unique shops such as specialized food shops and wholesalers. Ever since the promenade “Cotton Mirai Road” opened in 2019, more people have been visiting regardless of COVID periods, visiting the Shopping Street as well.

Nearest station

- JR Tōkaido Line, Keikyu Line: Yokohama Station, 15 minute walk



Map 13

Tammachi · ward office · waterfront Area

Shop with peace of mind 【SS】Matsumoto Sanchōme Shotenkai

A wide road and well-maintained sidewalk run throughout the Shopping Street, giving shoppers a peace of mind. The street lights have also been changed to LED, so the town is much brighter in the evening. This good-old downtown is a convenient and comfortable place to live.

Nearest station

- Tokyu Tōyoko Line: Tanmachi Station, 4 minute walk



Map 11

Tammachi · ward office · waterfront Area

Feel the history 【SS】Miyamae Shoueikai

A Shopping Street located within a 2 minute walk from Keikyu Kanagawa station. This historical area was the former Kanagawa lodging area, located on Old Tōkaido Street. In the heart of the Shopping Street is the “Susaki Okami” shrine. The shrine is famous for Reitaisai, a festival with night stalls, crowded with many visitors. With the recent construction boom of apartments and homes, more people have moved into the area, increasing potential for further revitalization of the community.

Nearest station

- Keikyu Line: Kanagawa Station, 2 minute walk



Map 14

Tammachi · ward office · waterfront Area

Unique restaurants galore 【SS】Matsumoto-dōri Shotengai

Including attractive restaurants, many shops are closely related to everyday lives of the community. Postwar, this historical Shopping Street thrived by selling everyday goods. In modern times, new facilities and shops such as nursery, hair salon, and osteopathic clinic have opened their doors for more visitors. The street lights have been changed to LED, making the area safer to walk after dark.

Nearest station

- Tokyu Tōyoko Line: Tanmachi Station, 4 minute walk



flower viewing spots



Map E Toyoko Flower Ryokudo (7 Hirodai-Ohtamachi)

A green way built on former rail-tracks of Tokyu Tōyoko Line between Higashi-hakuraku and Yokohama station. Take a stroll and enjoy the colorful flowers along the promenade. The beautiful flowers in the community flower bed and the trees that change color by season are sure to please your senses.

Best time to see flowers: Cherry blossom (March-April), Kobushi Magnolia (mid March-early April), Hydrangea (May-June), flowerbed



Map F Kumano Shrine (1-1-3 Higashi-Kanagawa)

Built in 1087, the shrine has a long and honorable history. On the precinct are sacred trees of Ginkgo and Maple which survived two great fires. In the Edo era, this area thrived as the Kanagawa lodging area on Tōkaido Road, with many travelers passing through. Soak in the area's history as you take a stroll in the autumn.

Best time to see flowers: Fall foliage (November-early December)



Map G Hoshinocho Park (9 Hoshinocho)

The welcoming flower bed is tenderly nurtured by volunteers in the local community. Its flowers add color to the feel of history in the park.

Best time to see flowers: Cherry blossom (March-April), Flower bed



Map H Kōgaya Park (3 Kōgaya)

This area was once a battle field in the Warring States period. It is now loved by many as a famous spot for cherry blossoms.

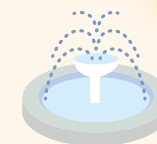
Best time to see flowers: Cherry blossom (March-April), Flower bed



Map I Tanmachi Park (1-12 Tanmachi)

Tulips with various colors are bloom in full glory, announcing the arrival of beautiful spring.

Best time to see flowers: Tulips (April)



Ōguchi Area

Map 15 Ōguchi Area Shops for everyday, lots of smiles, and friendly people [SS] Ōguchi-dōri Shotenkai

Approximately 90 shops selling fresh foods, everyday goods, and clothing are in this Shopping Street. Some of its popular initiatives include "premium gift vouchers", stamp rally with a bag of rice as the winning prize, sale event with a prize drawing, and the re-opening of night stalls.

Nearest station

- JR Yokohama Line: Ōguchi Station, 3 minute walk
- Keihin Kyuko Line: Koyasu Station, 6 minute walk





Map 16

Ōguchi Area Community-based! Specialty shops galore [SS] Ōguchi Ichibangai



This traditional Shopping Street starts from National Route 1 to Keikyu Koyasu station. There are many medical clinics such as dental, internal, and pediatrics in the area. Open late at night, you will find homey Izakaya and specialty restaurants. Also, there is a second-hand bike shop for good repair work, a camera shop that sells anything from antiques to the latest digital camera, a small accessory shop, and a watch repair shop. There are many events such as summer festival, autumn festival and prize drawings. Definitely worth a visit.

Nearest station

- JR Yokohama Line: Ōguchi Station, 8 minute walk
- Keihin Kyuko Line: Koyasu Station, 2 minute walk



Map 17

Ōguchi Area Full of warm heart [SS] Akebono-dōri Shoutenkai



Many long-time stores here have a reputation of offering kind, courteous customer service. With somewhat of a nostalgic atmosphere, the district attracts customers from children to elderlies. It is a popular spot for families on weekends. Some people have been visiting for three generations, proving its history in community based customer service.

Nearest station

- JR Yokohama Line: Ōguchi Station, 8 minute walk



Map 18

Ōguchi Area Aiming for new era in town development [SS] Okami Shoutenkai



As “new era in town development,” this shoutenkai was launched in 2020 with a wide area as its district. Ōguchi, Kaminoki, Nishi-terao, Matsumi, Irie, Koyasu are its main areas. The concept is to have intergenerational exchange, connecting the community and its people in both digital and analog ways. Regardless of one’s position, any small shop, company, school, and facility can participate in town development.

Nearest station

- JR Yokohama Line: Ōguchi station, 8 minute walk



flower viewing spots



Map J

Kaminoki Park (13 Kaminokidai)

A park using the slope of its natural landscape, near JR Ōguchi station. The highlight of this park with a great view is its pleasant walking trail. Visit flower beds in various locations throughout the park and enjoy seasonal flowers throughout the year, along with cherry blossoms in spring and fall foliage in autumn.

Best time to see flowers:

- Cherry blossom (March-April), Tulips (April), Fall foliage (November-early December)



Map K

Nishiterao-no-oka Park (2-1503-2 Nishiterao)

In the springtime, you will see a splendid color contrast of pink cherry blossoms along the slope and the green from the lawn. From grass sledding on a cardboard to the obstacle athletic course in a setting that resembles a castle, children are sure to enjoy the playground here.

Best time to see flowers:

- Cherry blossom (March-April), Tulips (April), Fall foliage (November-early December)

Map L

Iriechō Park (1-27-15 Irie)

A spacious, open-feel park near Shinkoyasu station. Trees surround the open area on the lawn, perfect for picnics during cherry blossom season. Down the stairway, there is an open free space on sandy ground where children can run around.

Best time to see flowers:

- Cherry blossom (March-April), Tulips (April), Fall foliage (November-early December)

